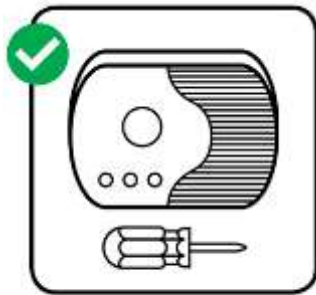


Take Extra Care

Smoke Alarms

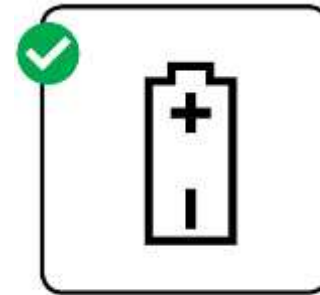
- Fit smoke alarms on every level of your home
- Test them weekly
- Change the batteries every year



Fit it



Test it

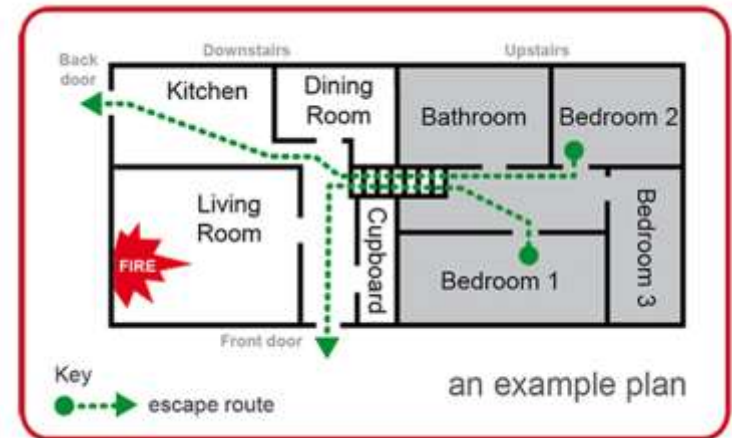


Change it

Take Extra Care

Escape Plans

- The best escape route is the normal way out of your home
- Think of a second route in case the first one is blocked
- Make sure exits are clear at all times



Take Extra Care

Cooking Safely

- Never leave cooking unattended
- Take care if you are wearing loose clothing
- Keep tea towels, cloths and leads away from the cooker and hob



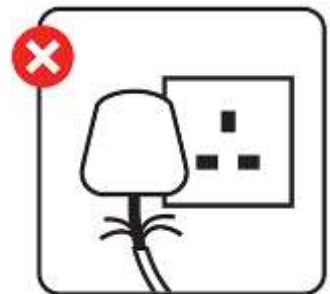
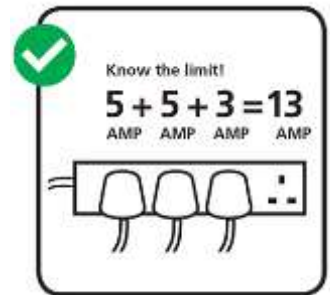
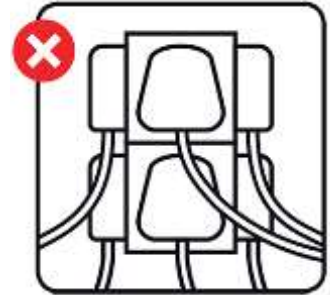
ROYAL BERKSHIRE
FIRE AND RESCUE SERVICE

MAKING BERKSHIRE SAFER

Take Extra Care

Electrical Safety

- Never overload sockets
- Unplug electrical appliances and chargers when you are not using them and when you go to bed
- Look for signs of dangerous or loose wiring



Take Extra Care

Smoking Safety

- Avoid smoking when tired, taking drugs or if you've been drinking
- **Put it out, right out** – make sure cigarettes are properly extinguished



ROYAL BERKSHIRE
FIRE AND RESCUE SERVICE

MAKING BERKSHIRE SAFER